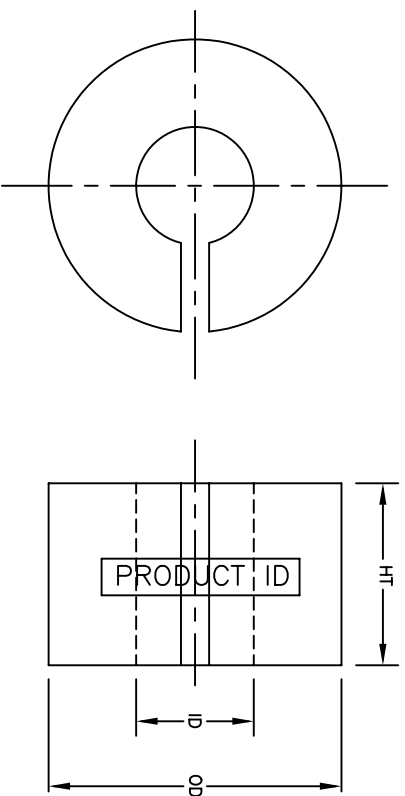


MP1306MPFC



Coated Core Specifications				Bare Core Specifications		
PART NO.	OD mm	ID mm	HT mm	OD mm	ID mm	HT mm
MP1306MPFC	14.67	7.46	7.87	13.46	8.00	6.35
Tolerance	max.	min.	max.			

Core Designation	Material DuPont	Manufacturer UL File #	Insulation System
M	EFB34SO	E206123	ClassB/ClassF

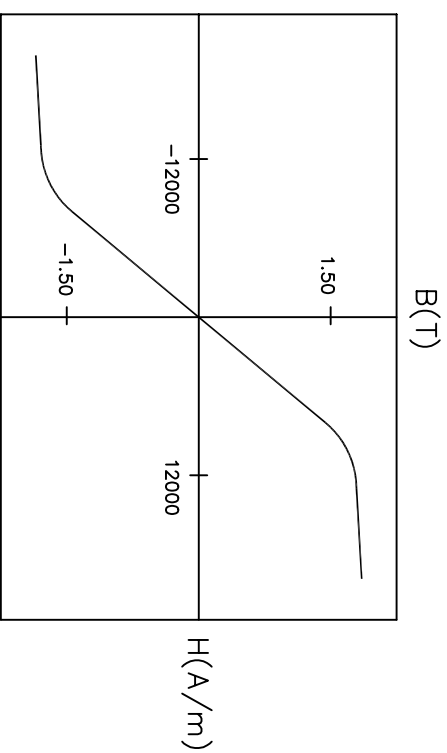
NOTE:

1. PART IDENTIFICATION CODE AND MANUFACTURING DATE CODE ARE PRINTED ON CURVED SURFACE.
2. MINIMUM COATING THICKNESS OF 0.076 mm (3 MILS) ON ANY POINT OF CORE IS MAINTAINED.
3. ALL MEASUREMENTS ARE DONE AT ROOM TEMPERATURE.
4. OVALITY OF 95% ON OUTER AND INNER DIAMETER IS PERMISSIBLE.
5. MAXIMUM CONTINUOUS OPERATING TEMPERATURE IS 150°C.

MAGNETIC TOLERANCES:

PERMEABILITY $\pm 15\%$ $A \pm 15\%$ Mass \pm 3%

CORE MATERIAL:
METGLAS® ALLOY 2605SA1.



TYPICAL B-H LOOP

Performance Specifications									
	I_m	A_c	Mass	Volume	Effective	ΔI	W_d	W_d/A_c	Core Loss W
	cm	cm ²	g	cm ³	Perm	nH	cm ²	cm ⁴	
3.3-37	0.151	3.7	0.51	100	56	0.44	0.066	0.73	

Al is measured at 10 kHz/100 mV.

l_m = mean magnetic path length

A_c = net cross-sectional area

W_0 = core window area

NOTICE :- THIS DRAWING, THE PROPERTY OF HITACHI METGLAS IS FURNISHED SUBJECT TO RETURN ON DEMAND AND THE CONDITION THAT THE INFORMATION AND TECHNOLOGY EMBODIED HEREIN SHALL NOT BE DISCLOSED OR USED AND THE DRAWING SHALL NOT BE REPRODUCED OR COPIED IN WHOLE OR PART BY ANY PERSON WITHOUT THE EXPRESS AUTHORIZATION OF ANY PERSON WHO MAY RECEIVE OR OBSERVE THIS DESIGN WILL BE HELD STRICTLY LIABLE FOR ANY VIOLATION WHETHER WILLFUL OR NEGLIGENT.	TOLERANCES UNLESS OTHERWISE SPECIFIED												
	NO.	REVISION	BY	APPR.	DATE	DIMENSIONS		DESCRIPTION	POWER FACTOR		SHEET	PART NO.	REV. NO.
						SCALE			CORRECTION CORE				
	1.	ADDED NOTE # 5 & COATED CORE OD WAS 14.67mm,DISPLAYED MEANING FOR IN/AG & WG. COMPANY NAME WAS HONEYWELL.	VS	RK	02/12/04	PROJECTION	N.T.S		AS NOTED		1 OF 1	MP1306MPC	1
							THIRD ANGLE						
<div><div>HITACHI METGLAS</div><div><div>SD</div><div>DRAWN</div></div><div><div>12/16/02</div><div>DATE</div></div><div><div>RK</div><div>CHECKED</div></div><div><div>12/16/02</div><div>DATE</div></div><div><div>DM,RM,ST</div><div>APPROVED</div></div><div><div>12/16/02</div><div>DATE</div></div></div>													