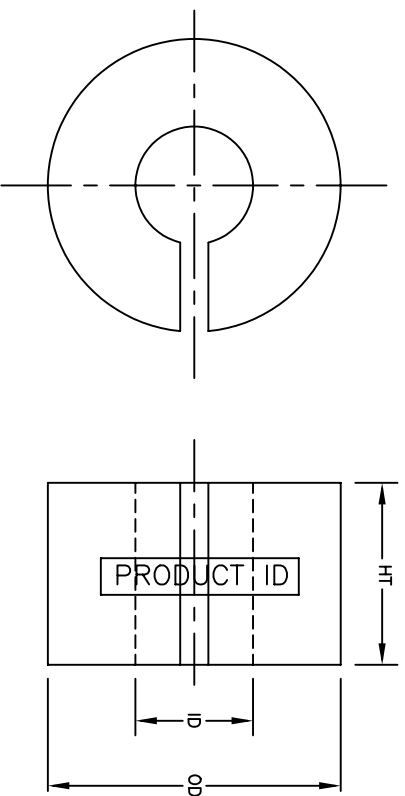


MP2510MPFC



Coated Core Specifications				Bare Core Specifications		
PART NO.	OD mm	ID mm	HT mm	OD mm	ID mm	HT mm
MP2510MPFC	26.88	18.51	11.05	25.55	19.05	9.53
Tolerance	max.	min.	max.			

Core Designation	Material DuPont	Manufacturer UL File #	Insulation System
M	EFB534S0	E206123	ClassB/ClassF

NOTE:

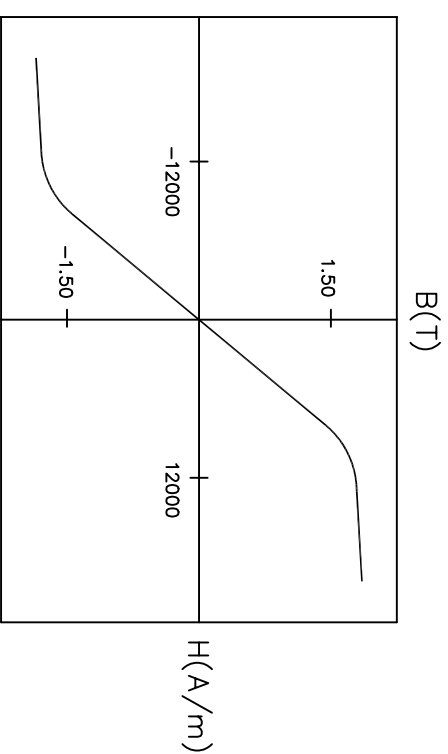
1. PART IDENTIFICATION CODE AND MANUFACTURING DATE CODE ARE PRINTED ON CURVED SURFACE.
2. MINIMUM COATING THICKNESS OF 0.076 mm (3 MILS) ON ANY POINT OF CORE IS MAINTAINED.
3. ALL MEASUREMENTS ARE DONE AT ROOM TEMPERATURE.
4. OVALITY OF 95% ON OUTER AND INNER DIAMETER IS PERMISSIBLE.
5. MAXIMUM CONTINUOUS OPERATING TEMPERATURE IS 150°C.

MAGNETIC TOLERANCES:

PERMEABILITY $\pm 15\%$ $A \pm 15\%$ Mass \pm 3%

CORE MATERIAL:

METGLAS® ALLOY 2605SA1.



Performance Specifications							
Im	Ac	Mass	Volume	Effective	Al	W ₀	W ₀ Ac
cm	cm ²	g	cm ³	Perm	nH	cm ²	Core Loss
7.01	0.269	13.6	1.89	100	48	2.69	0.725
							2.7

Al is measured at 10 kHz/100 mV.

l_m = mean magnetic path length

$$A_c = \text{net cross-sectional area}$$
 W_0 = core window area

NOTICE :- THIS DRAWING, THE PROPERTY OF HITACHI METGLAS IS FURNISHED SUBJECT TO RETURN ON DEMAND AND THE CONDITION THAT THE INFORMATION AND TECHNOLOGY EMBODIED HEREIN SHALL NOT BE REPRODUCED OR COPIED IN WHOLE OR IN PART WITHOUT THE WRITTEN PERMISSION OF HITACHI METGLAS. ANY PERSON WHO MAY RECEIVE THIS DESIGN WILL BE HELD STRICTLY LIABLE FOR ANY VIOLATION WHETHER WILLFUL OR NEGLIGENT.													
TOLERANCES UNLESS OTHERWISE SPECIFIED													
NO.	REVISION	BY	APPR.	DATE	<div><div><div><div><div>HITACHI</div><div>METGLAS</div></div></div><div><div>SD</div><div>12/16/02</div><div>12/16/02</div><div>DM,RM,ST</div><div>12/16/02</div></div><div><div>DRAWN</div><div>DATE</div><div>CHECKED</div><div>DATE</div><div>APPROVED</div><div>DATE</div></div></div></div>								
1.	ADDEN NOTE # 5 & DISPLAYED MEANING FOR 'm'ac & 'w'o COMPANY NAME WAS HONEWELL.	VS	RK	02/12/04									
					DIMENSIONS		DESCRIPTION		POWER FACTOR		SHEET	PART NO.	REV. NO.
					SCALE	N.T.S	CORRECTION CORE		AS NOTED		1 OF 1	MP2510MPFC	1
					PROJECTION		THIRD ANGLE						