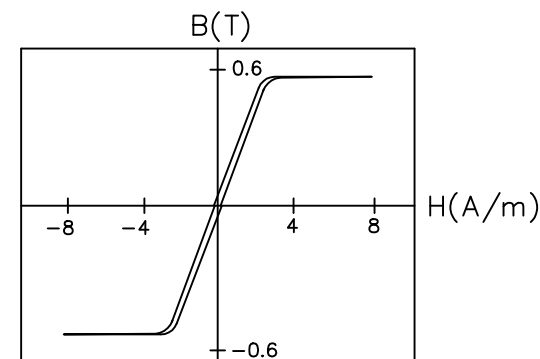
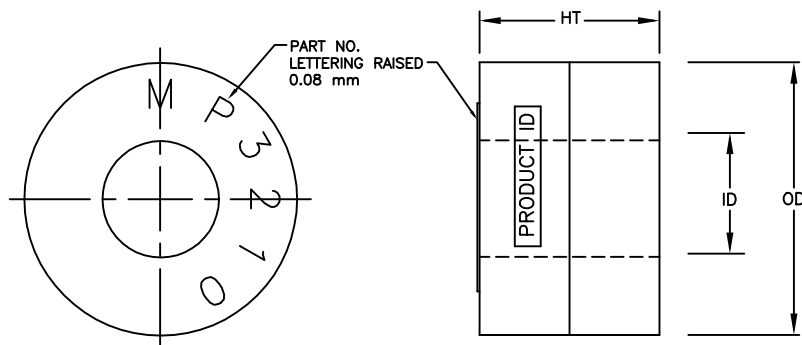


MP3210X4AF



TYPICAL B-H LOOP

Boxed Core Specifications				Bare Core Specifications		
PART NO.	OD mm	ID mm	HT mm	OD mm	ID mm	HT mm
MP3210X4AF	35.0	19.9	11.5	32.41	22.23	9.53
Tolerance (mm)	±0.3	±0.3	±0.3			

Box Designation (X)	Material DuPont	Manufacturer UL File #	Manufacturer Flammability Rating	Manufacturer Recommended Temperature
P	ZYTEL 70G33L	E41938	HB	120°C
L	ZYTEL FR50	E41938	94 V0	130°C
V	RYNITE FR530L	E69578	94 V0	150°C

Performance Specifications						
$l_m$	$A_c$	Mass	Vol	$W_a$	$W_a A_c$	$A_l$
cm	cm <sup>2</sup>	g	cm <sup>3</sup>	cm <sup>2</sup>	cm <sup>4</sup>	$\mu H$
8.58	0.388	25.20	3.33	3.10	1.202	>40.9

$A_l$  is measured at 1 kHz, 2.0 mA/cm.

$l_m$  = mean magnetic path length  
 $A_c$  = net cross-sectional area  
 $W_a$  = core window area

**NOTE:**

- PART IDENTIFICATION CODE AND MANUFACTURING DATE CODE ARE PRINTED ON CURVED SURFACE.
- ALL MEASUREMENTS ARE DONE AT ROOM TEMPERATURE.
- MAXIMUM CONTINUOUS OPERATING TEMPERATURE IS 90°C (IRRESPECTIVE OF TYPE OF BOX USED.)

**MAGNETIC TOLERANCES:**  
 PERMEABILITY  $\geq 72,000$   
 MASS  $\pm 3\%$

**CORE MATERIAL:**  
 METGLAS® ALLOY 2714A.

<b>NOTICE :-</b> THIS DRAWING, THE PROPERTY OF HITACHI METGLAS IS FURNISHED SUBJECT TO RETURN ON DEMAND AND THE CONDITION THAT THE INFORMATION AND TECHNOLOGY EMBODIED HEREIN SHALL NOT BE DISCLOSED OR USED AND THE DRAWING SHALL NOT BE REPRODUCED OR COPIED IN WHOLE OR IN PART EXCEPT AS PREVIOUSLY AUTHORIZED IN WRITING. ANY PERSON WHO MAY RECEIVE OR OBSERVE THIS DESIGN WILL BE HELD STRICTLY LIABLE FOR ANY VIOLATION WHETHER WILLFUL OR NEGLIGENT.	TOLERANCES UNLESS OTHERWISE SPECIFIED		NO.	REVISION	BY	APPR.	DATE	DIMENSIONS	MM	DESCRIPTION MAGNAPERM(FLAT LOOP) MAGNETIC TOROIDAL CORE		SHEET	PART NO.	REV. NO.				
			1.	ADDED TOL. $\geq$ TO A1	VS	RK	01/30/02	SCALE	N.T.S	MATERIAL AS NOTED		1 OF 1	MP3210X4AF	2				
			2.	ADDED NOTE # 3 & PART NO. WAS MP3210V4AF,COMPANY NAME WAS HONEYWELL.	VS	RK	02/10/04	PROJECTION	THIRD ANGLE									
								<div>HITACHI METGLAS</div>					SR	07/12/01	SR	07/19/01	RH,RM,ST	07/19/01
													DRAWN	DATE	CHECKED	DATE	APPROVED	DATE