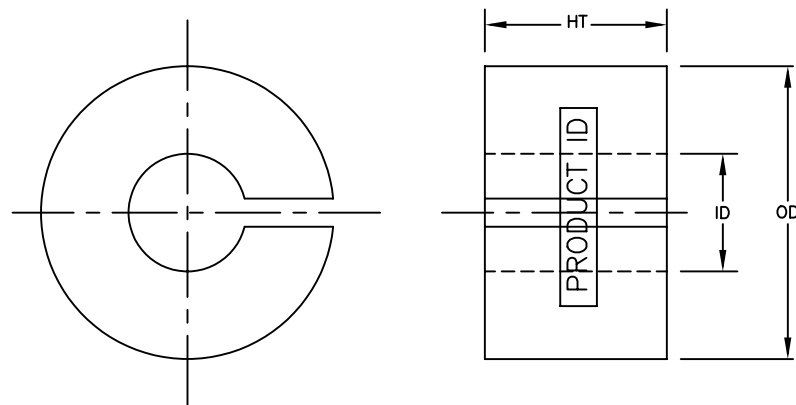


MP3310MPFC



Coated Core Specifications				Bare Core Specifications		
PART NO.	OD mm	ID mm	HT mm	OD mm	ID mm	HT mm
MP3310MPFC	34.07	14.70	11.05	32.44	15.24	9.53
Tolerance	max.	min.	max.			

Core Designation	Material DuPont	Manufacturer UL File #	Insulation System
M	EFB534S0	E206123	ClassB/ClassF

NOTE:

- PART IDENTIFICATION CODE AND MANUFACTURING DATE CODE ARE PRINTED ON CURVED SURFACE.
- MINIMUM COATING THICKNESS OF 0.076 mm (3 MILS) ON ANY POINT OF CORE IS MAINTAINED.
- ALL MEASUREMENTS ARE DONE AT ROOM TEMPERATURE.
- OVALITY OF 95% ON OUTER AND INNER DIAMETER IS PERMISSIBLE.
- MAXIMUM CONTINUOUS OPERATING TEMPERATURE IS 150°C.

MAGNETIC TOLERANCES:

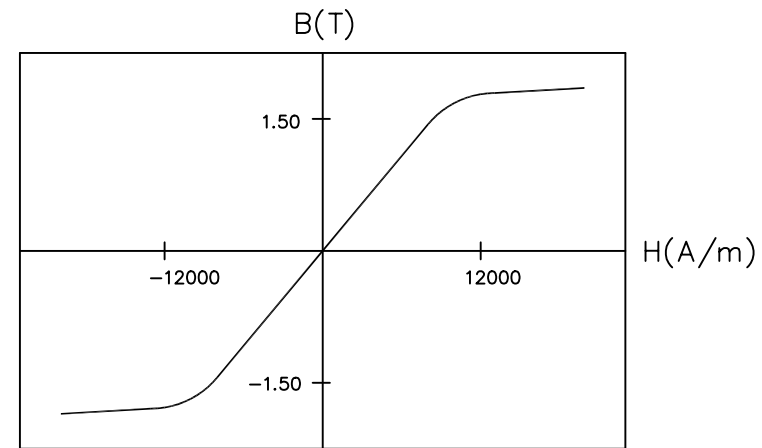
PERMEABILITY $\pm 15\%$

$A_l \pm 15\%$

Mass $\pm 3\%$

CORE MATERIAL:

METGLAS[®] ALLOY 2605SA1.



TYPICAL B-H LOOP

Performance Specifications								
l_m cm	A_c cm ²	Mass g	Volume cm ³	Effective Perm	A_l nH	W_a cm ²	$W_a A_c$ cm ⁴	Core Loss W
7.49	0.712	38.3	5.34	100	120	1.70	1.210	7.66

A_l is measured at 10 kHz/100 mV.

l_m = mean magnetic path length

A_c = net cross-sectional area

W_a = core window area

NOTICE :- THIS DRAWING, THE PROPERTY OF HITACHI METGLAS IS FURNISHED SUBJECT TO RETURN ON DEMAND AND THE CONDITION THAT THE INFORMATION AND TECHNOLOGY EMBODIED HEREIN SHALL NOT BE DISCLOSED OR USED AND THE DRAWING SHALL NOT BE REPRODUCED OR COPIED IN WHOLE OR IN PART EXCEPT AS PREVIOUSLY AUTHORIZED IN WRITING. ANY PERSON WHO MAY RECEIVE OR OBSERVE THIS DESIGN WILL BE HELD STRICTLY LIABLE FOR ANY VIOLATION WHETHER WILLFUL OR NEGLIGENT.	TOLERANCES UNLESS OTHERWISE SPECIFIED		NO.	REVISION	BY	APPR.	DATE	DIMENSIONS	MM	DESCRIPTION			POWER FACTOR CORRECTION CORE		SHEET	PART NO.	REV. NO.	
		1.	ADDED NOTE # 5 & DISPLAYED MEANING FOR Im,Ac & Wa. COMPANY NAME WAS HONEYWELL.	VS	RK	02/12/04	SCALE	N.T.S	PROJECTION	THIRD ANGLE	MATERIAL	AS NOTED			1 OF 1	MP3310MPFC	1	
										HITACHI METGLAS			SD	12/16/02	RK	12/16/02	DM,RM,ST	12/16/02
													DRAWN	DATE	CHECKED	DATE	APPROVED	DATE