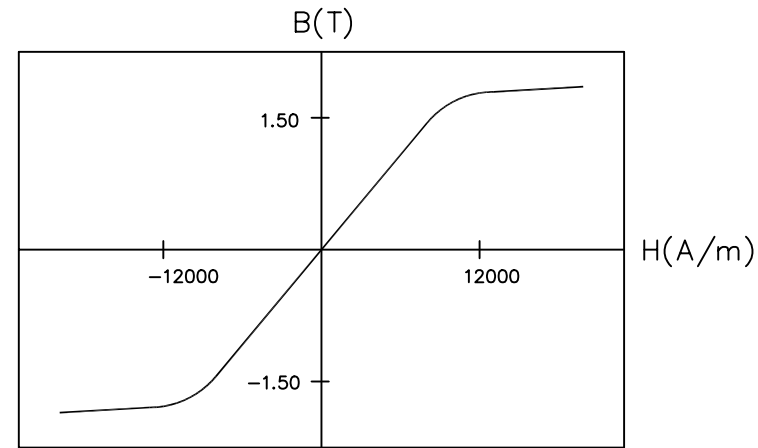
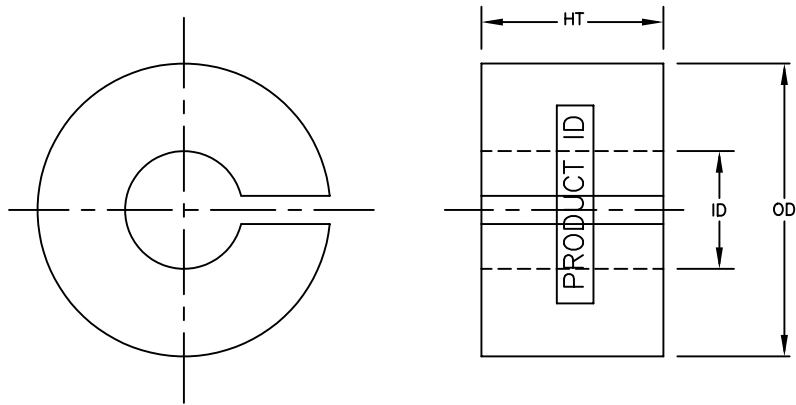


MP3510MPFC



TYPICAL B-H LOOP

Coated Core Specifications				Bare Core Specifications		
PART NO.	OD mm	ID mm	HT mm	OD mm	ID mm	HT mm
MP3510MPFC	36.52	18.51	11.05	34.93	19.05	9.53
Tolerance	max.	min.	max.			

Core Designation	Material DuPont	Manufacturer UL File #	Insulation System
M	EFB534S0	E206123	ClassB/ClassF

Performance Specifications								
l_m	A_c	Mass	Volume	Effective	A_l	W_a	$W_a A_c$	Core Loss W
cm	cm ²	g	cm ³	Perm	nH	cm ²	cm ⁴	
8.48	0.658	40.00	5.58	100	97.5	2.69	1.770	8.01

NOTE:

- PART IDENTIFICATION CODE AND MANUFACTURING DATE CODE ARE PRINTED ON CURVED SURFACE.
- MINIMUM COATING THICKNESS OF 0.076 mm (3 MILS) ON ANY POINT OF CORE IS MAINTAINED.
- ALL MEASUREMENTS ARE DONE AT ROOM TEMPERATURE.
- OVALITY OF 95% ON OUTER AND INNER DIAMETER IS PERMISSIBLE.
- MAXIMUM CONTINUOUS OPERATING TEMPERATURE IS 150°C.

MAGNETIC TOLERANCES:

PERMEABILITY $\pm 15\%$

$A_l \pm 15\%$

Mass $\pm 3\%$

CORE MATERIAL:

METGLAS[®] ALLOY 2605SA1.

A_l is measured at 10 kHz/100 mV.

l_m = mean magnetic path length

A_c = net cross-sectional area

W_a = core window area

NOTICE :- THIS DRAWING, THE PROPERTY OF HITACHI METGLAS IS FURNISHED SUBJECT TO RETURN ON DEMAND AND THE CONDITION THAT THE INFORMATION AND TECHNOLOGY EMBODIED HEREIN SHALL NOT BE DISCLOSED OR USED AND THE DRAWING SHALL NOT BE REPRODUCED OR COPIED IN WHOLE OR IN PART EXCEPT AS PREVIOUSLY AUTHORIZED IN WRITING. ANY PERSON WHO MAY RECEIVE OR OBSERVE THIS DESIGN WILL BE HELD STRICTLY LIABLE FOR ANY VIOLATION WHETHER WILLFUL OR NEGLIGENT.	TOLERANCES UNLESS OTHERWISE SPECIFIED		NO.	REVISION	BY	APPR.	DATE	DIMENSIONS	MM	DESCRIPTION		POWER FACTOR CORRECTION CORE		SHEET	PART NO.	REV. NO.	
			1.	ADDED NOTE # 5 & DISPLAYED MEANING FOR Im,Ac & Wg.COMPANY NAME WAS HONEYWELL,MINIMUM COATING THK. WAS 0.127mm(5 MILS)	VS	RK	02/12/04	SCALE	N.T.S	MATERIAL	AS NOTED		1 OF 1	MP3510MPFC	1		
HITACHI METGLAS											SD	12/16/02	RK	12/16/02	DM,RM,ST	12/16/02	
											DRAWN	DATE	CHECKED	DATE	APPROVED	DATE	