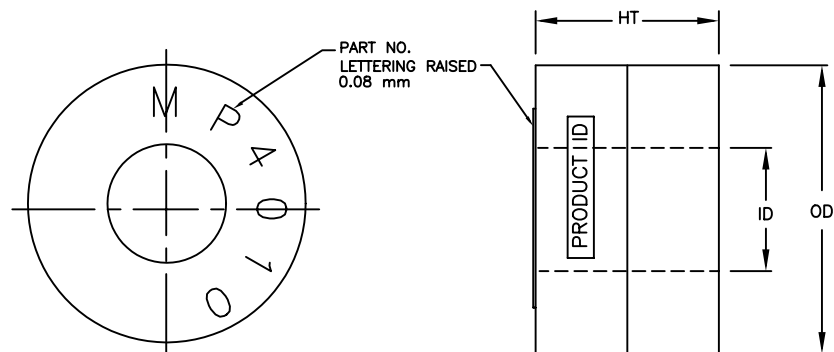


MP4010XDGC



Boxed Core Specifications				Bare Core Specifications		
PART NO.	OD mm	ID mm	HT mm	OD mm	ID mm	HT mm
MP4010XDGC	43.1	19.9	11.5	39.90	22.23	9.53
Tolerance (mm)	±0.6	±0.6	±0.6			

Box Designation (X)	Material DuPont	Manufacturer UL File #	Manufacturer Flammability Rating	Manufacturer Recommended Temperature
P	ZYTEL 70G33L	E41938	HB	120°C
L	ZYTEL FR50	E41938	94 V0	130°C
V	RYNITE FR530L	E69578	94 V0	150°C

NOTE:

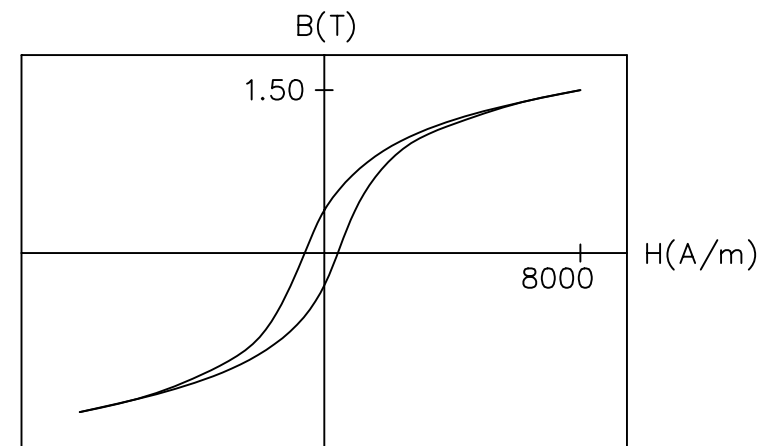
1. PART IDENTIFICATION CODE AND MANUFACTURING DATE CODE ARE PRINTED ON SURFACES AS SHOWN.
2. ALL MEASUREMENTS ARE DONE AT ROOM TEMPERATURE.
3. MAXIMUM CONTINUOUS OPERATING TEMPERATURE WILL BE 120°C ( IF "P" TYPE BOX USED), 130°C ( IF "L" TYPE BOX USED) AND 150°C ( IF "V" TYPE BOXED IS USED)

MAGNETIC TOLERANCES:

PERMEABILITY  $\pm 15\%$   
 $A_i \pm 15\%$   
 $M_{\text{mass}} \pm 3\%$

CORE MATERIAL:

METGLAS<sup>®</sup> ALLOY 2605SA1.



TYPICAL B-H LOOP

Performance Specifications							
I <sub>m</sub>	A <sub>c</sub>	Mass	Vol	Initial	Al	W <sub>a</sub>	W <sub>a</sub> A <sub>c</sub>
cm	cm <sup>2</sup>	g	cm <sup>3</sup>	Perm	nH	cm <sup>2</sup>	cm <sup>4</sup>
9.76	0.732	51.33	7.15	245	231.1	3.10	2.270

$A_I$  is measured at 10 kHz/100 mV.

$l_m$  = mean magnetic path length  
 $A_c$  = net cross-sectional area  
 $W_g$  = core window area

[illegible]