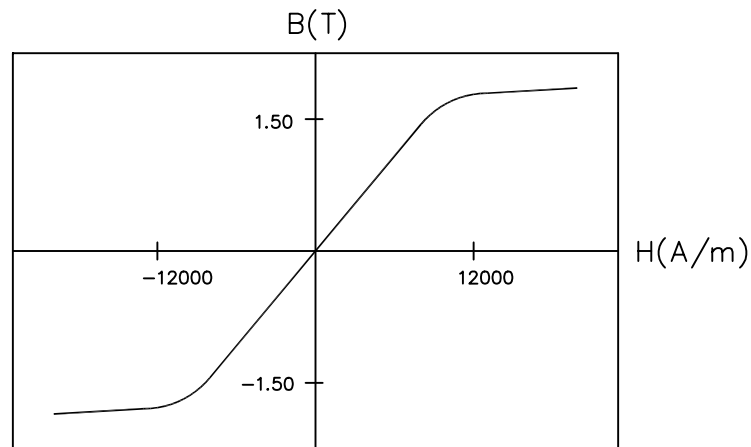
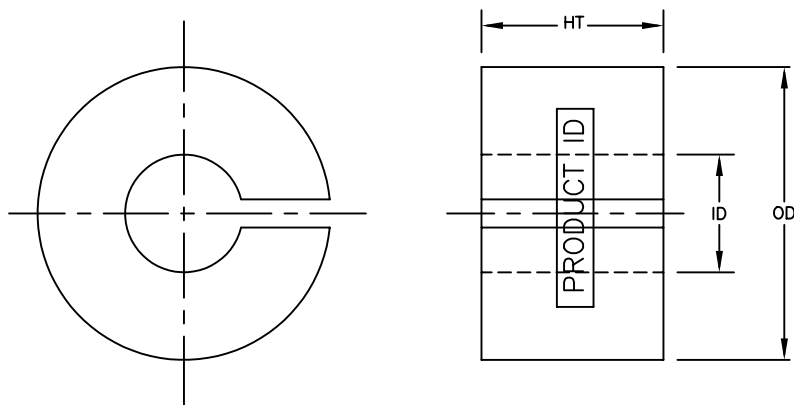


MP5812MPFC



TYPICAL B-H LOOP

Coated Core Specifications				Bare Core Specifications		
PART NO.	OD mm	ID mm	HT mm	OD mm	ID mm	HT mm
MP5812MPFC	60.10	24.86	14.22	58.00	25.40	12.70
Tolerance	max.	min.	max.			

Core Designation	Material DuPont	Manufacturer UL File #	Insulation System
M	EFB534S0	E206123	ClassB/ClassF

Performance Specifications								
I _m cm	A _c cm ²	Mass g	Volume cm ³	Effective Perm	A _i nH	W _a cm ²	W _a A _c cm ⁴	Core Loss W
13.10	1.801	172.79	23.59	100	172.8	4.85	8.740	33.88

NOTE:

1. PART IDENTIFICATION CODE AND MANUFACTURING DATE CODE ARE PRINTED ON CURVED SURFACE.
2. MINIMUM COATING THICKNESS OF 0.076 mm (3 MILS) ON ANY POINT OF CORE IS MAINTAINED.
3. ALL MEASUREMENTS ARE DONE AT ROOM TEMPERATURE.
4. OVALITY OF 95% ON OUTER AND INNER DIAMETER IS PERMISSIBLE.
5. MAXIMUM CONTINUOUS OPERATING TEMPERATURE IS 150°C.

MAGNETIC TOLERANCES:

PERMEABILITY $\pm 15\%$ $A_1 \pm 15\%$ Mass $\pm 3\%$

CORE MATERIAL:

METGLAS[®] ALLOY 2605SA1.

A_I is measured at 10 kHz/100 mV.

l_m = mean magnetic path length

 A_G = net cross-sectional area
$$W_g = \text{core window area}$$

NOTICE :- THIS DRAWING, THE PROPERTY OF HITACHI METGLAS IS FURNISHED SUBJECT TO RETURN ON DEMAND AND THE CONDITION THAT THE INFORMATION AND TECHNOLOGY EMBODIED HEREIN SHALL NOT BE DISCLOSED OR USED AND THE DRAWING SHALL NOT BE REPRODUCED OR COPIED IN WHOLE OR IN PART EXCEPT AS PREVIOUSLY AUTHORIZED IN WRITING. ANY PERSON WHO MAY RECEIVE OR OBSERVE THIS DESIGN WILL BE HELD STRICTLY LIABLE FOR ANY VIOLATION WHETHER WILLFUL OR NEGLIGENT.	TOLERANCES UNLESS OTHERWISE SPECIFIED		NO.	REVISION	BY	APPR.	DATE	DIMENSIONS	MM	DESCRIPTION	POWER FACTOR CORRECTION CORE		SHEET	PART NO.	REV. NO.		
			1.	ADDED NOTE # 5 & DISPLAYED MEANING FOR m_{Ac} & W_0 COMPANY NAME WAS, HONEWELL, MINIMUM COATING THICKNESS & MASS WERE 0.127mm(5 MILS) & 169.40g.	VS	RK	02/12/04	SCALE	N.T.S	MATERIAL			1 OF 1	MP5812MPFC	1		
								PROJECTION	THIRD ANGLE	AS NOTED							
								<div>HITACHI METGLAS</div>				SR	07/19/01	SR	07/19/01	RH,RM,ST	07/19/01
												DRAWN	DATE	CHECKED	DATE	APPROVED	DATE