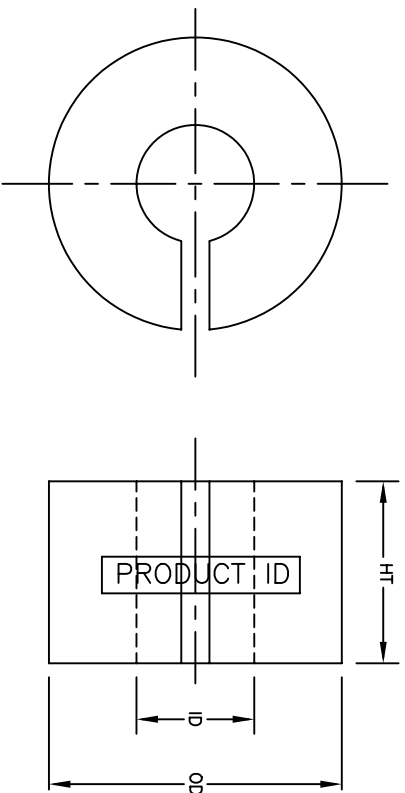


MP7089MPFC



Coated Core Specifications				Bare Core Specifications		
PART NO.	OD mm	ID mm	HT mm	OD mm	ID mm	HT mm
MP7089MPFC	46.55	28.95	15.72	44.68	29.49	14.19
Tolerance	max.	min.	max.			

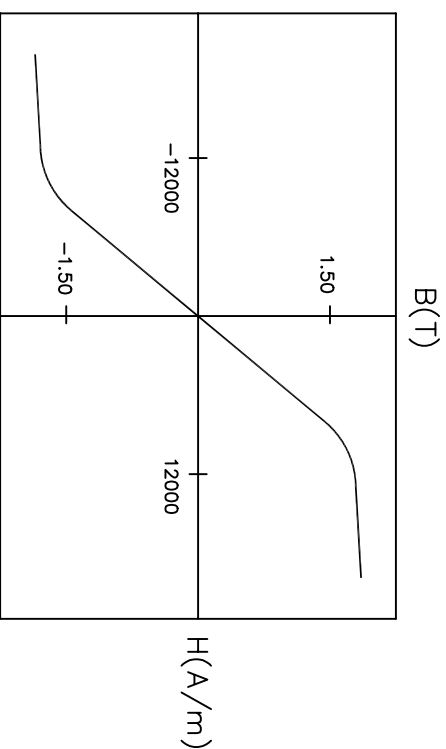
NOTE:

1. PART IDENTIFICATION CODE AND MANUFACTURING DATE CODE ARE PRINTED ON CURVED SURFACE.
2. MINIMUM COATING THICKNESS OF 0.076 mm (3 MILS) ON ANY POINT OF CORE IS MAINTAINED.
3. ALL MEASUREMENTS ARE DONE AT ROOM TEMPERATURE.
4. OVALITY OF 95% ON OUTER AND INNER DIAMETER IS PERMISSIBLE.
5. MAXIMUM CONTINUOUS OPERATING TEMPERATURE IS 150°C.

MAGNETIC TOLERANCES:

PERMEABILITY $\pm 15\%$ $A_1 \pm 15\%$ Mass \pm 3%

CORE MATERIAL:
METGLAS® ALLOY 2605SA1.



TYPICAL B-H LOOP

Performance Specifications							
Im	Ac	Mass	Volume	Effective	Al	W ₀	W ₀ Ac
cm	cm ²	g	cm ³	Perm	nH	cm ²	cm ⁴
11.65	0.938	79.96	10.93	100	101	6.58	6.174

AI is measured at 10 kHz/100 mV.

 l_m = mean magnetic path length
$$A_c = \text{net cross-sectional area}$$
 W_0 = core window area

NOTICE :- THIS DRAWING, THE PROPERTY OF HITACHI METGLAS IS FURNISHED SUBJECT TO RETURN ON DEMAND AND THE CONDITION THAT THE INFORMATION AND TECHNOLOGY EMBODIED HEREIN SHALL NOT BE DISCLOSED OR USED AND THE DRAWING SHALL NOT BE REPRODUCED OR COPIED IN ANY MANNER EXCEPT AS PREVIOUSLY AUTHORIZED IN WRITING. ANY PERSON WHO MAY RECEIVE OR OBSERVE THIS DESIGN WILL BE HELD STRICTLY LABLE FOR ANY VIOLATION WHETHER WILLFUL OR NEGLIGENCE.	TOLERANCES UNLESS OTHERWISE SPECIFIED														
	NO.	REVISION	BY	APPR.	DATE	DIMENSIONS			DESCRIPTION	POWER FACTOR	SHEET	PART NO.	REV. NO		
		ADDED NOTE # 5 & DISPLAYED NOTE # 6				SCALE	MM	N.T.S	THIRD ANGLE	MATERIAL	CORRECTION CORE				
		1. NAME WAS "HONEYWELL COATED CORE OD & MASS WERE .4631mm & .752g"	VS	RK	02/12/04						AS NOTED		1 OF 1	MP7089MPTC	1
<div><div>HITACHI METGLAS</div><div><div>SD</div><div>12/16/02</div><div>RK</div><div>12/16/02</div><div>DM,RM,ST</div><div>12/16/02</div></div><div><div>DRAWN</div><div>DATE</div><div>CHECKED</div><div>DATE</div><div>APPROVED</div><div>DATE</div></div></div>															