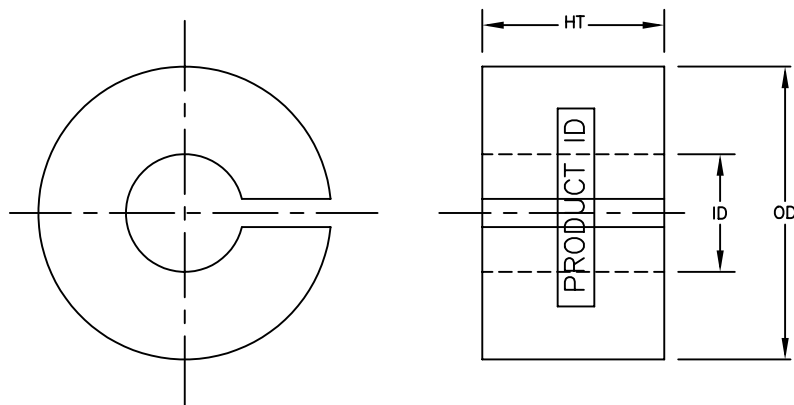


MP7548MPFC



Coated Core Specifications				Bare Core Specifications		
PART NO.	OD mm	ID mm	HT mm	OD mm	ID mm	HT mm
MP7548MPFC	33.25	19.73	11.05	31.60	20.27	9.53
Tolerance	max.	min.	max.			

Core Designation	Material DuPont	Manufacturer UL File #	Insulation System
M	EFB534S0	E206123	ClassB/ClassF

NOTE:

- PART IDENTIFICATION CODE AND MANUFACTURING DATE CODE ARE PRINTED ON CURVED SURFACE.
- MINIMUM COATING THICKNESS OF 0.076 mm (3 MILS) ON ANY POINT OF CORE IS MAINTAINED.
- ALL MEASUREMENTS ARE DONE AT ROOM TEMPERATURE.
- OVALITY OF 95% ON OUTER AND INNER DIAMETER IS PERMISSIBLE.
- MAXIMUM CONTINUOUS OPERATING TEMPERATURE IS 150°C.

MAGNETIC TOLERANCES:

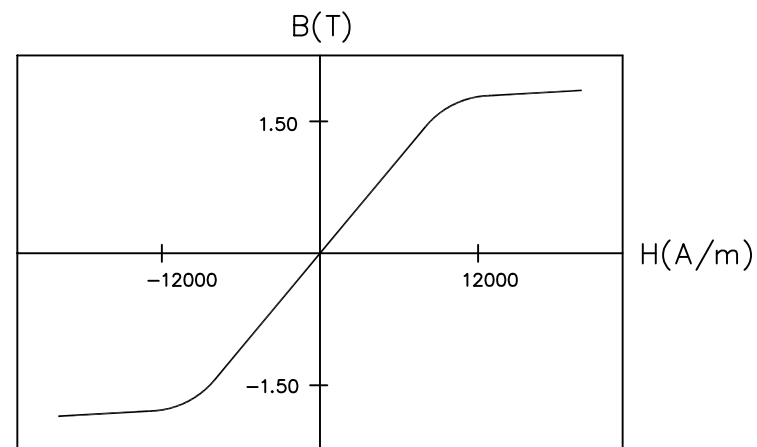
PERMEABILITY $\pm 15\%$

$A_i \pm 15\%$

Mass $\pm 3\%$

CORE MATERIAL:

METGLAS[®] ALLOY 2605SA1.



TYPICAL B-H LOOP

Performance Specifications								
l_m	A_c	Mass	Volume	Effective	A_i	W_a	$W_a A_c$	Core Loss
cm	cm ²	g	cm ³	Perm	nH	cm ²	cm ⁴	W
8.15	0.469	28.01	3.82	100	72	3.06	1.435	5.49

A_i is measured at 10 kHz/100 mV.

l_m = mean magnetic path length

A_c = net cross-sectional area

W_a = core window area

NOTICE :- THIS DRAWING, THE PROPERTY OF HITACHI METGLAS IS FURNISHED SUBJECT TO RETURN ON DEMAND AND THE CONDITION THAT THE INFORMATION AND TECHNOLOGY EMBODIED HEREIN SHALL NOT BE DISCLOSED OR USED AND THE DRAWING SHALL NOT BE REPRODUCED OR COPIED IN WHOLE OR IN PART EXCEPT AS PREVIOUSLY AUTHORIZED IN WRITING. ANY PERSON WHO MAY RECEIVE OR OBSERVE THIS DESIGN WILL BE HELD STRICTLY LIABLE FOR ANY VIOLATION WHETHER WILLFUL OR NEGLIGENT.	TOLERANCES UNLESS OTHERWISE SPECIFIED		NO.	REVISION		BY	APPR.	DATE	DIMENSIONS		MM	DESCRIPTION				POWER FACTOR CORRECTION CORE		SHEET		PART NO.		REV. NO.						
			1.	ADDED NOTE # 5 & DISPLAYED MEANING FOR l_m , A_c & W_a COMPANY NAME WAS HONEYWELL COATED CORE OD & MASS WERE 33.08mm & 27.5g.	VS	RK	02/12/04	SCALE	N.T.S		MATERIAL	AS NOTED				1 OF 1		MP7548MPFC		1								
								PROJECTION	THIRD ANGLE																			
								<div>HITACHI METGLAS</div>																				
									SD	12/16/02	RK		12/16/02	DM,RM,ST		12/16/02												
									DRAWN	DATE	CHECKED		DATE	APPROVED		DATE												